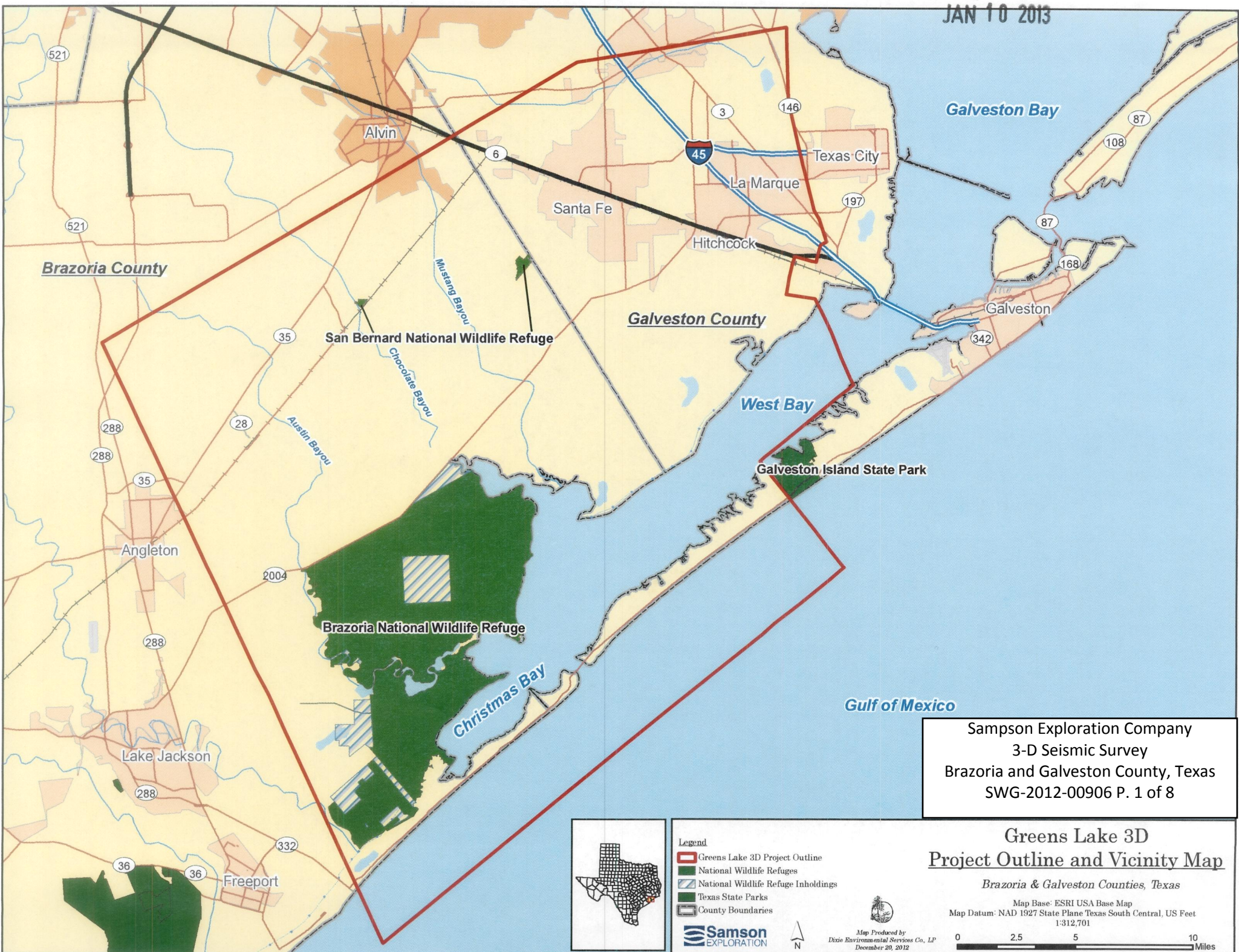


JAN 10 2013

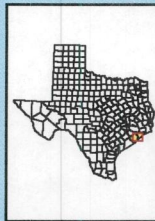


Sampson Exploration Company
 3-D Seismic Survey
 Brazoria and Galveston County, Texas
 SWG-2012-00906 P. 1 of 8

**Greens Lake 3D
 Project Outline and Vicinity Map**

Brazoria & Galveston Counties, Texas

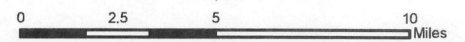
Map Base: ESRI USA Base Map
 Map Datum: NAD 1927 State Plane Texas South Central, US Feet
 1:312,701

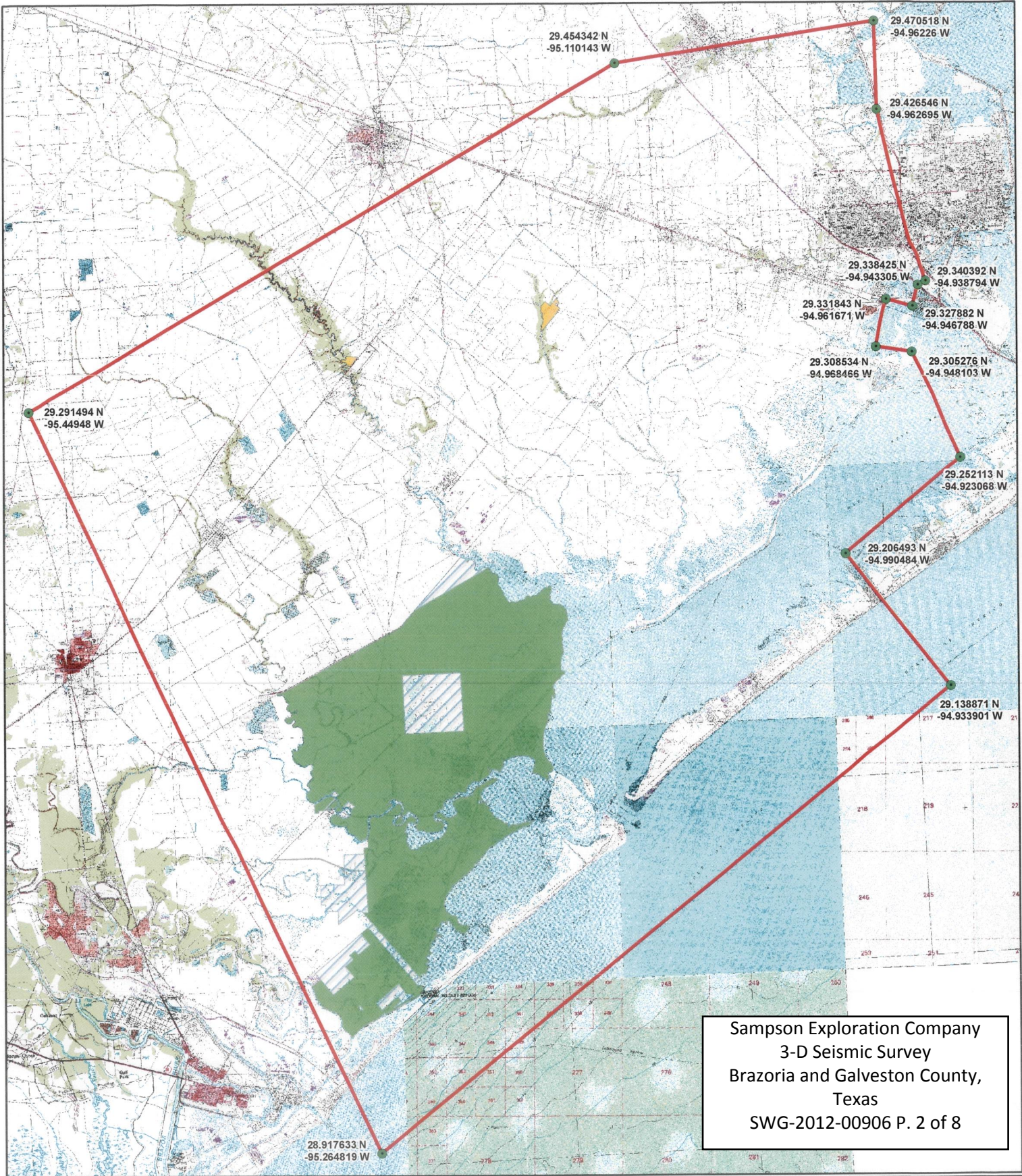


- Legend**
- Greens Lake 3D Project Outline
 - National Wildlife Refuges
 - National Wildlife Refuge Inholdings
 - Texas State Parks
 - County Boundaries



Map Produced by
 Dixie Environmental Services Co., LP
 December 20, 2012





Legend

- Corner Coordinates
- ▭ Greens Lake 3D Project Outline
- National Wildlife Refuges
- ▭ Brazoria National Wildlife Refuge
- ▨ Inholding
- ▭ San Bernard National Wildlife Refuge

**Greens Lake 3D
Project Outline**

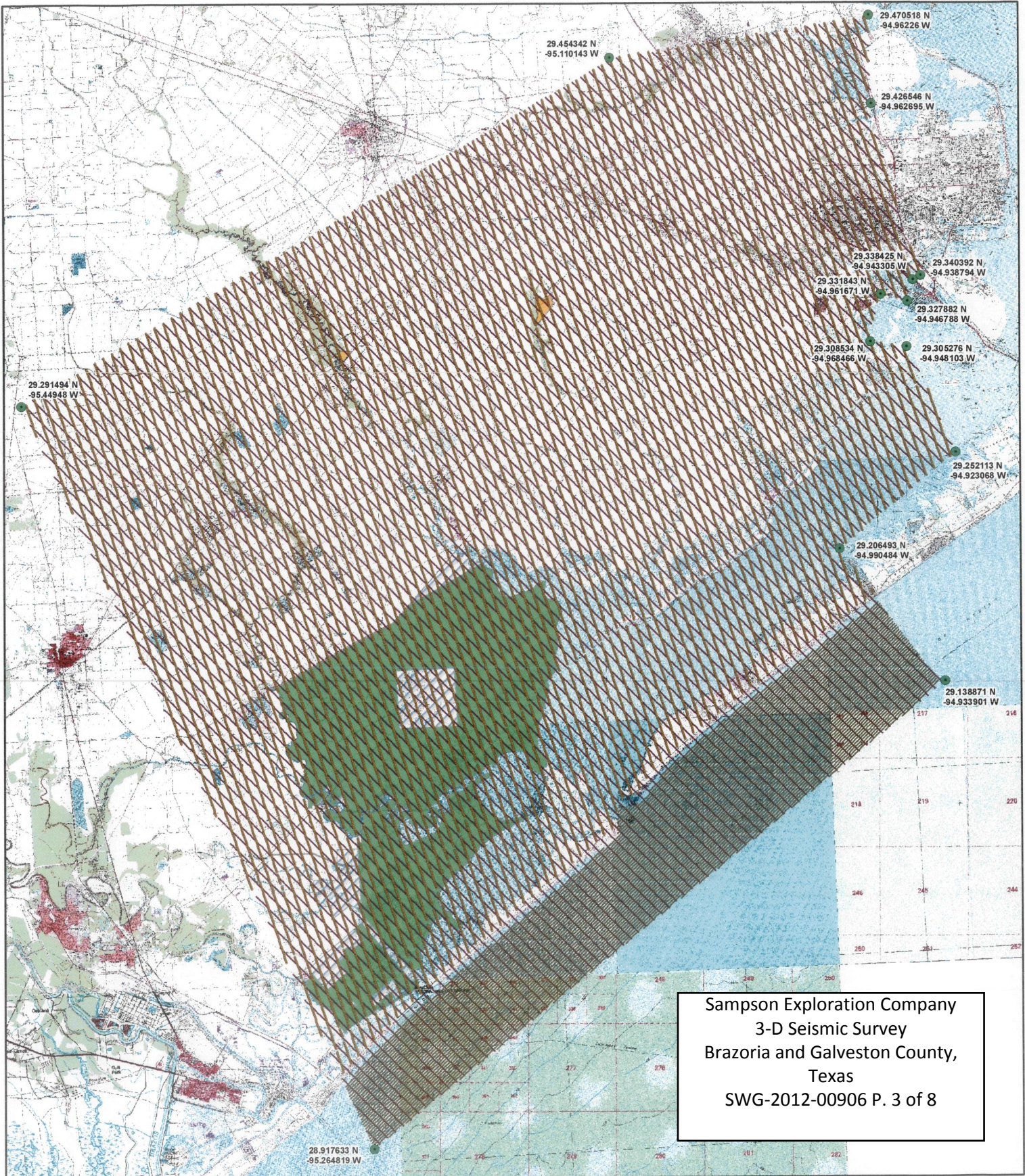
Brazoria & Galveston Counties, Texas

Map Base: 1:24K & 1:100K DRGs from <http://www.tnris.org>
 Map Datum: NAD 1927 State Plane Texas South Central, US Foot
 Coordinates Displayed in Decimal Degrees
 1:270,000



Map Produced by
 Dixie Environmental Services Co., LP
 December 20, 2012



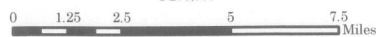


Sampson Exploration Company
 3-D Seismic Survey
 Brazoria and Galveston County,
 Texas
 SWG-2012-00906 P. 3 of 8

- Legend**
- Corner Coordinates
 - Pre-Plot Source Points
 - Pre-Plot Receiver Points
- National Wildlife Refuges**
- Brazoria National Wildlife Refuge
 - Inholding
 - San Bernard National Wildlife Refuge

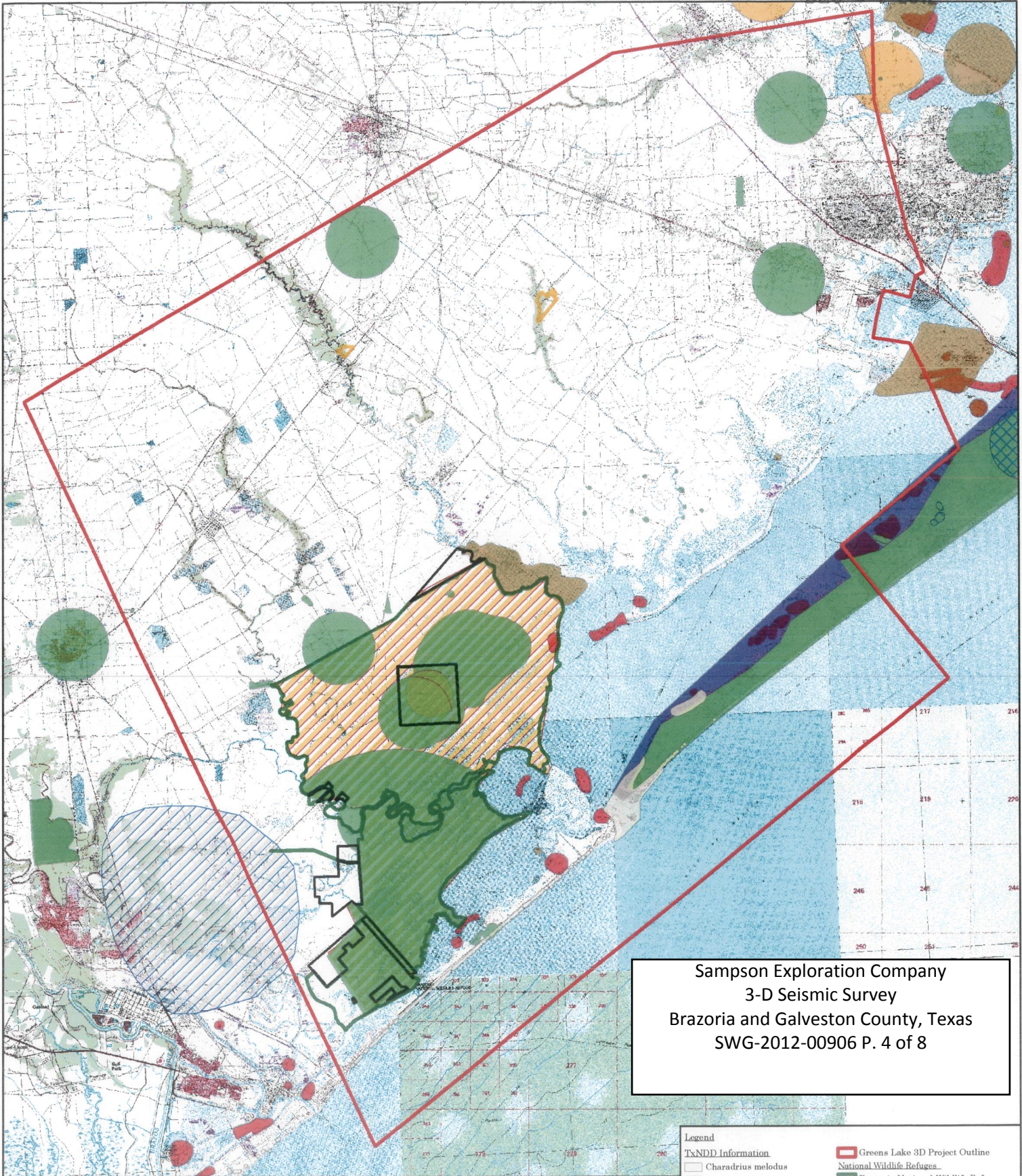
**Greens Lake 3D
 Project Pre-Plot Locations**

Brazoria & Galveston Counties, Texas
 Map Base: 1:24K & 1:100K DRGs from <http://www.tnris.org>
 Map Datum: NAD 1927 State Plane Texas South Central, US Foot
 Coordinates Displayed in Decimal Degrees
 1:270,000



Map Produced by
 Dixie Environmental Services Co., LP
 December 20, 2012



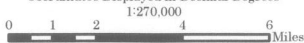


Sampson Exploration Company
 3-D Seismic Survey
 Brazoria and Galveston County, Texas
 SWG-2012-00906 P. 4 of 8

**Greens Lake 3D
 Project Outline with
 Texas Natural Diversity Database (TxNDD) Information**

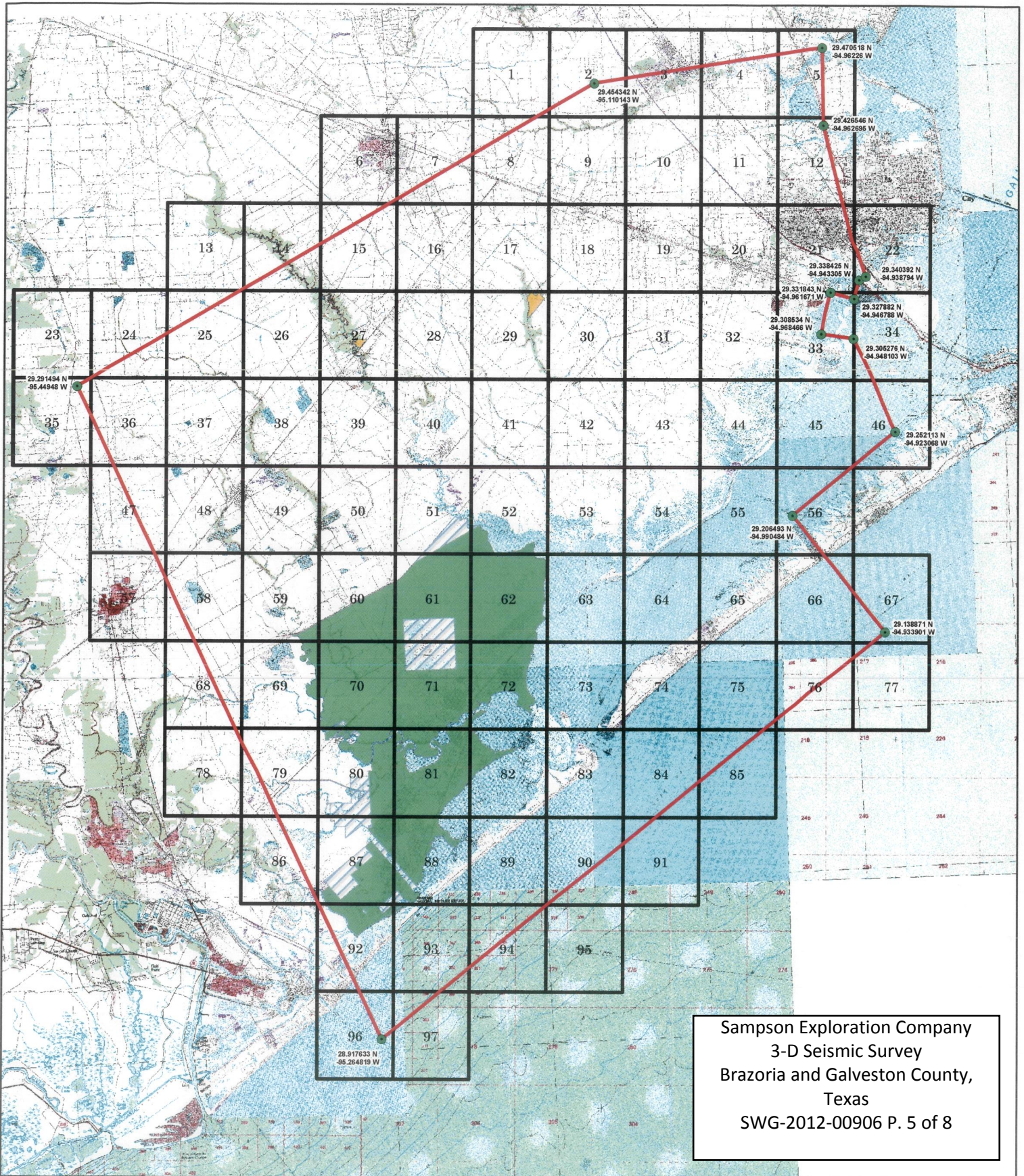
Brazoria & Galveston Counties, Texas

Map Base: 1:24K & 1:100K DRGs from <http://www.tnris.org>
 Map Datum: NAD 1927 State Plane Texas South Central, US Foot
 Coordinates Displayed in Decimal Degrees



Map Produced by
 Dixie Environmental Services Co., LP
 December 20, 2012

- Legend**
- | | |
|--------------------------------|--------------------------------------|
| TxNDD Information | Greens Lake 3D Project Outline |
| Charadrius melodus | National Wildlife Refuges |
| Chelonia midas | Brazoria National Wildlife Refuge |
| Migratory Songbird Fallow Site | Inholding |
| Lepidochelys kempii | San Bernard National Wildlife Refuge |
| Malaclemys terrapin littoralis | |
| Tympanuchus cupido attwateri | |
| Trichechus manatus | |
| Nerodia clarkii | |
| Herpailurus yagouaroundi | |
| Haliaeetus leucocephalus | |
| Rookery | |
| Sensitive Plants | |



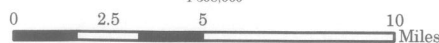
Sampson Exploration Company
 3-D Seismic Survey
 Brazoria and Galveston County,
 Texas
 SWG-2012-00906 P. 5 of 8

Legend

- Corner Coordinates
- ▭ Greens Lake 3D Project Outline
- National Wildlife Refuges
- Brazoria National Wildlife Refuge
- ▨ Inholding (Brazoria National Wildlife Refuge)
- San Bernard National Wildlife Refuge

**Greens Lake 3D
 Grid Map**

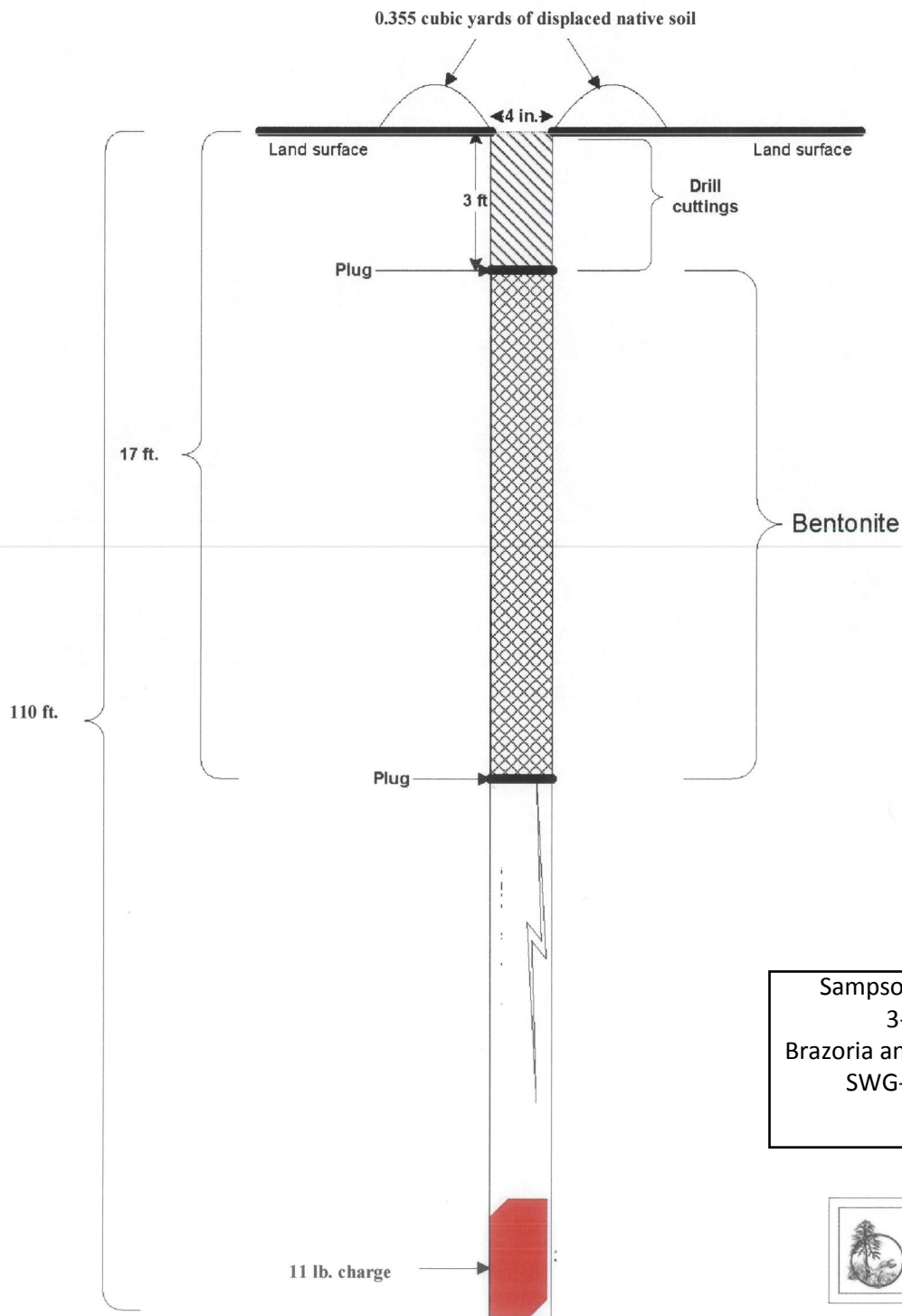
Brazoria & Galveston Counties, Texas
 Map Base: 1:24K & 1:100K DRGs from <http://www.tnris.org>
 Map Datum: NAD 1927 State Plane Texas South Central, US Feet
 Coordinates Displayed in Decimal Degrees
 1:308,000



Map Produced by
 Dixie Environmental Services Co., LP
 December 20, 2012



Cross Section View of Single, 110 ft Shothole

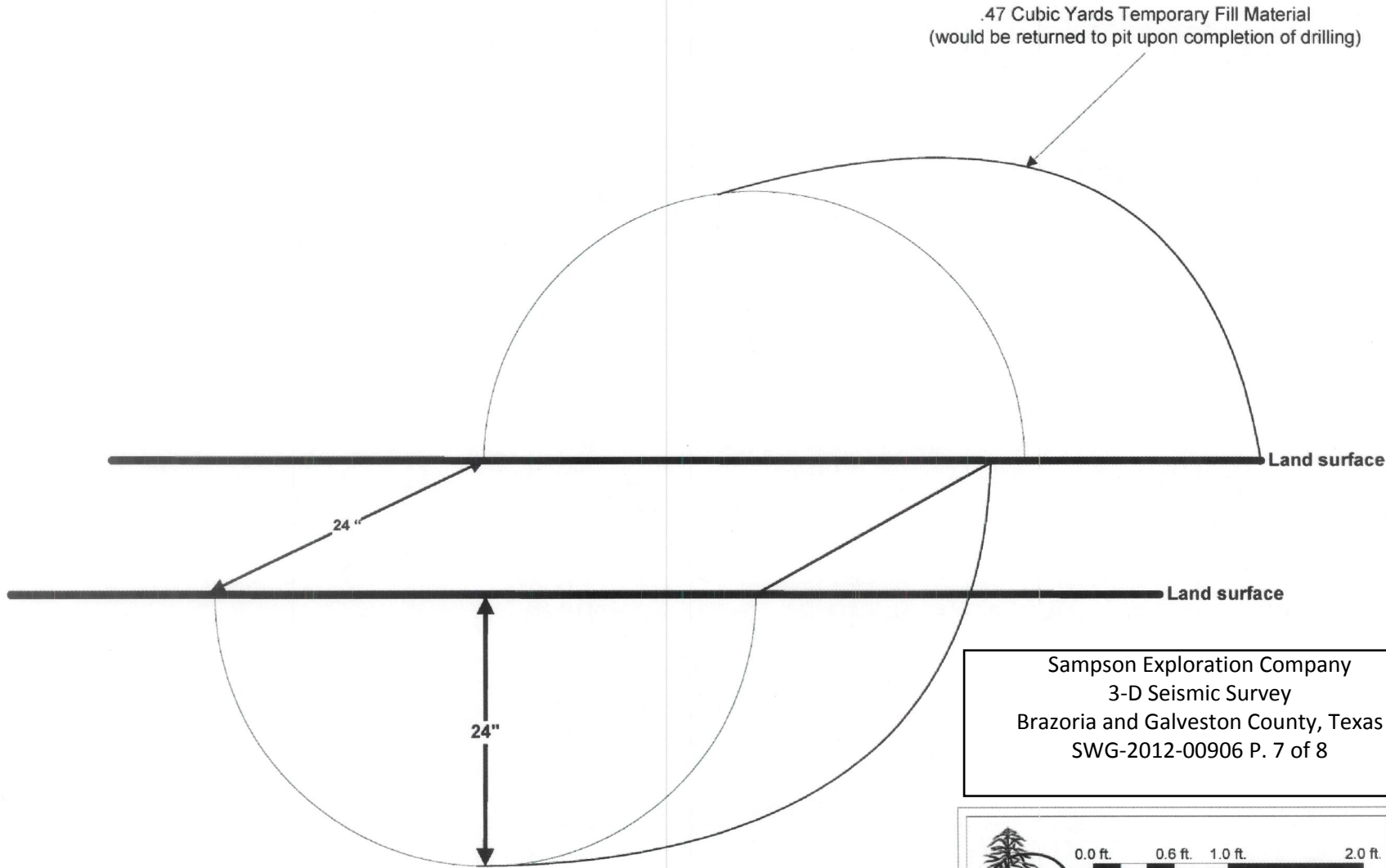


Sampson Exploration Company
3-D Seismic Survey
Brazoria and Galveston County, Texas
SWG-2012-00906 P. 5 of 8

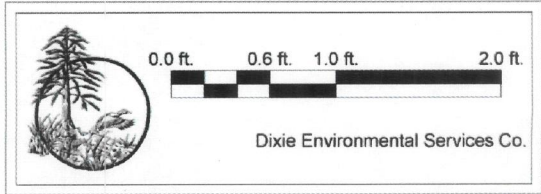


Water Pit Excavated for Drilling

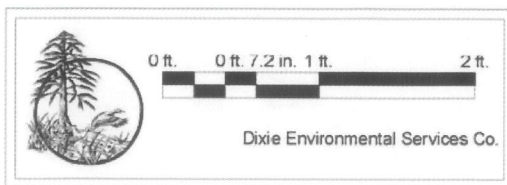
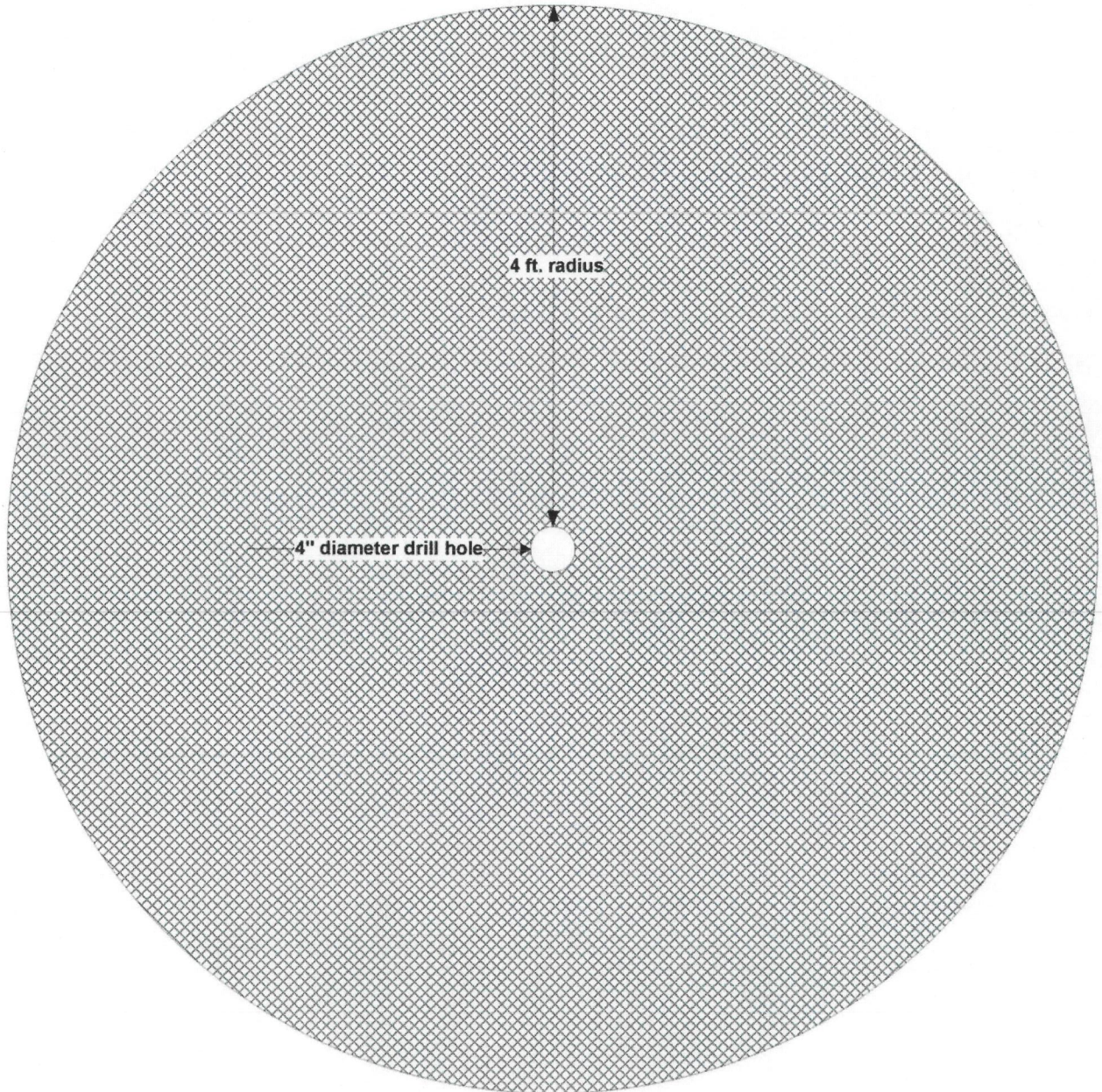
.47 Cubic Yards Temporary Fill Material
(would be returned to pit upon completion of drilling)



Sampson Exploration Company
3-D Seismic Survey
Brazoria and Galveston County, Texas
SWG-2012-00906 P. 7 of 8



Area of Deposition of Drill Cuttings



Sampson Exploration Company
3-D Seismic Survey
Brazoria and Galveston County, Texas
SWG-2012-00906 P. 8 of 8